

7358 Beverly Blvd
Los Angeles, CA 90036
t. +1.323.936.7020



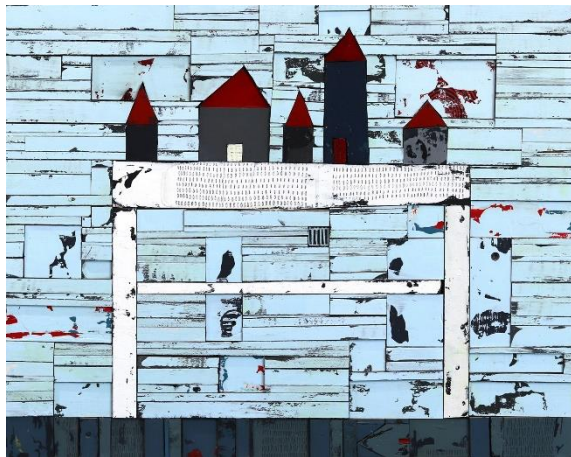
info@artspacewarehouse.com | www.artspacewarehouse.com
Mon - Sat 10am - 6pm | Sun 12 - 6pm

REBECCA KLUNDT

Rebecca Klundt is a happy native of Salt Lake City where she lives with her husband Kevin and their five children. In 2012 she went back to finish the degree she began 20 years ago at Brigham Young University in Provo, Utah, graduating with a BFA in 2014. Her work is a product of three characteristics of her personality.



First is her desire to use the unusable. About this she says, "when you are driven to create, you begin to see things around you in a different light. I have been impressed with the idea that everything, literally everything around us, including our own bodies, came up out of the earth. We have mined and continue to mine the earth and use its resources, which once we are done with them are left to be taken back by the earth. I am interested in mining the mined. There are piles of transformed earth everywhere. They have been altered by men and are a record of man's ability to transform. These are my palette which I collect, break down and then rebuild, combining colors and textures in new ways. There is something very satisfying in the creative challenge of using the unusable."



The second characteristic is the desire to clean up and organize. "I see a pile or mess and I want to compact the pile, putting it into the tightest possible space and giving it gravity. I love to work 2 dimensionally because once I have compacted a pile, I can then hang it on a wall where the amount of space it requires is minimal and the space all around it is free and uncluttered."

Third is her love of significant line. "The lines found in nature are made when 2 things come up against each other. I have a deep passion for beautiful lines and especially those that happen naturally. I am very aware of the lines I create as I am combining materials within a frame. I love the cracks and fissures in the slick rock mountains of Utah and try to imitate them in my art."

Education

2014 BFA, Brigham Young University, Provo, UT

Exhibitions

2022	Art and Soup Charity Expo, Salt Palace, Salt Lake City, UT	2019	Religious & Spiritual Show, Springville Museum, Springville, Utah
2021	Rouge Show, Sears Art Museum, St George, UT		BDAC Statewide Annual, Bountiful, Utah
	Certain Women: Reflections on a Mother in Heaven, Salt Lake City, UT		Statewide Annual, SLC, Utah
2020	Spring Salon, Springville Museum, Utah		SLCC President's Show, SLC, Utah
	Holy Visitation: The Dawning of the Restoration, Washington, DC		Spring Salon, Springville Museum, Springville, Utah
			LDS International Art Competition, SLC Utah

Artspace Warehouse is one of the world's **leading galleries for savvy contemporary art collectors**. With galleries in Zurich and Los Angeles, Artspace Warehouse specializes in *guilt-free international urban, figurative, pop, graffiti and abstract art*.

7358 Beverly Blvd

Los Angeles, CA 90036

t. +1.323.936.7020

info@artspacewarehouse.com | www.artspacewarehouse.com

Mon - Sat 10am - 6pm | Sun 12 - 6pm



- | | | | |
|------|--|------|---|
| 2018 | Certain Women Show, Anthony's Fine Art, SLC, Utah
Terzian Gallery, Park City, Utah
Women Artists Group Show, Provo Library, Provo, Utah
BDAC Juried Show, Bountiful, Utah
Religious and Spiritual Show, Springville Museum, Springville, Utah
Spring Salon, Springville Art Museum, Springville, Utah | 2014 | Solo Exhibition, BFA Thesis Exhibition, BF Larsen Gallery, Brigham Young University
Annual Student Show, Brigham Young University, Provo UT 5th Place, |
| 2017 | Statewide Annual, SLC, Utah
President's Show, Salt Lake Community College, Utah
Spring Salon, Springville Museum, Springville, Utah
Group Show, Terzian Galleries, Park City, Utah | 2013 | Red Show, Terra Nova Gallery, Provo Utah
House and Home, Solo Show, BF Larsen Gallery, Provo Utah
Solo Show, Schorr Gallery, Salt Lake City Utah
Statewide Annual, Rio Gallery, Salt Lake City Utah
Covert Operations, Group Show, Orem County Library, Orem UT |
| 2016 | 2 man show Phillips Gallery, SLC, Utah | | Annual Student Show, Brigham Young University, Provo |
| 2015 | Phillip's Gallery Winter Group Show, SLC, Utah
Solo Exhibition, Reformation: a reordering of elements, Alice Gallery, SLC, Utah | | Like Kites, Veridian Center, Salt Lake City, UT
Mapping the Whole, Juried Show, Brigham Young University, Provo UT
Of Other Places, Group Exhibition, Gallery 303, Provo UT |



Artspace Warehouse is one of the world's **leading galleries for savvy contemporary art collectors**. With galleries in Zurich and Los Angeles, Artspace Warehouse specializes in *guilt-free international urban, figurative, pop, graffiti and abstract art*.