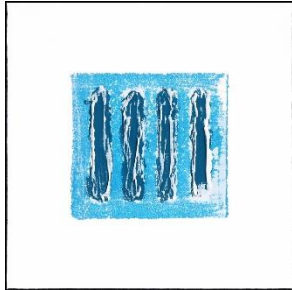


## LEN KLIKUNAS

Len Klikunas was born in 1944 in Chicago, Illinois. Klikunas constructs altered three dimensional canvases and paints them to modify experienced reality through visual perception. The "Blocks" series is a mix of art and architecture, hovering between minimalist painting and sculpture. It employs *shizen* (自然): the Japanese concept of naturalness, absence of pretense or artificiality.



He explores how to articulate the tension of materials and limits of multi-dimensionality in sculptural paintings. Material is stretched over a supporting three-dimensional framework, like a tent, and coated with paint. Klikunas lines his perforated black artworks with black gauze in order to keep a darkness behind the openings, creating a sense of depth.

The work is characterized by “mindful artlessness” and simplicity and is understated and subtle.

### EDUCATION

- 1966 BA Stanford University, Palo Alto, CA
- 1970 MA California State University Fullerton, Fullerton, CA

### SOLO EXHIBITIONS

- 2018 Lacy Lines, The District, Boise, Idaho  
Horizons, Landscapes, The District, Boise, Idaho
- 2013 Block in the Void, The District, Boise, Idaho
- 2012 Back of the Light, The District, Boise, Idaho
- 1979 Nudes by Klikunas, Courtyard Gallery, Portland, Oregon
- 1976 Solar Votives, Clackamas College Gallery, Oregon City, Oregon

### RECENT GROUP EXHIBITIONS

- 2020 Midnight Blue, Artspace Warehouse, Los Angeles, CA  
Reflections and Shadows, Meridian Library, ID  
Behind the Red Door, Initial Point Gallery, ID
- 2019 Affordable Art Fair, New York, NY  
Roots, Nampa Civic Center, Nampa, ID  
Binary Response, Artspace Warehouse, Los Angeles, CA  
After Dark: A Duality, Nampa Civic Center, Nampa, ID
- 2018 Affordable Art Fair, New York, NY  
Artspace Warehouse, Los Angeles, CA  
Art Palm Springs, CA
- 2017 Artspace Warehouse, Los Angeles, CA
- 2016 6 by Six, Art Source Gallery, Boise, Idaho (juried)  
This American Life, Treasure Valley Artists Alliance, Boise, Idaho (juried)  
Celebrating Private Idaho, Treasure Valley Artists Alliance, Boise, Idaho (juried)

Inner Workings, Surel's Place, Winston C. Mitchell and Surel L. Mitchell Family Foundation honorarium, Garden City, Idaho (juried)

- 2015 Hunting and Gathering Exhibition, Treasure Valley Artists Alliance, Boise, Idaho (juried)  
Artspace Warehouse, Los Angeles, California  
2nd 2015 Showcase Competition, winner, Artslant Bellingham National Salon des Refusés, Whatcom Museum, Bellingham, Washington
- 2011 Elon University Gallery, Elon, North Carolina
- 2010 Idaho Triennial, Boise Art Museum, Boise, Idaho

### PUBLICATIONS

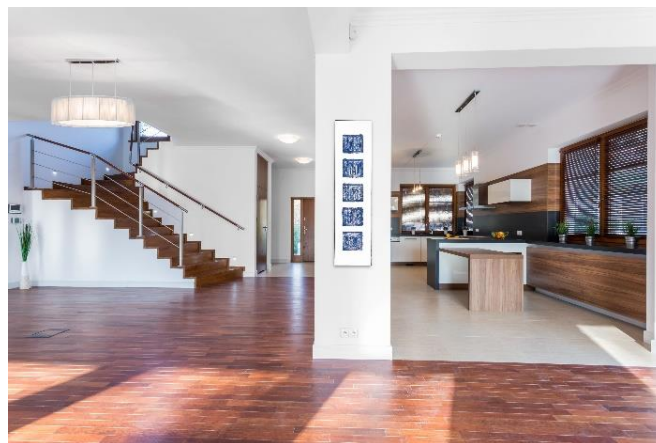
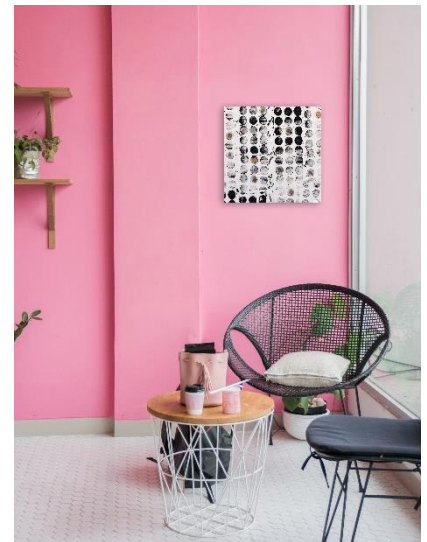
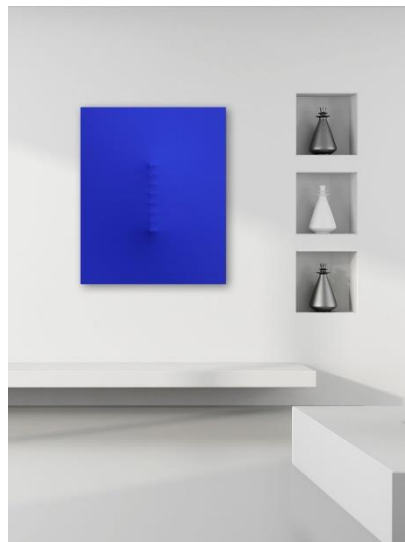
- 2010 ArtDaily.org, Feb 5–May 25, 2010
- 2010 Boise Weekly Vol. 19 Issue 15, Oct 6–12, 2010
- 2010 Sustain + Expand, Boise Art Museum, Boise, Idaho
- 2010 Idaho Statesman, Boise, Idaho, Taking the Pulse of Idaho's Art World, Christopher Schnoor, Oct 6, 2010
- 2010 Rimas K. Simaitis, Sep18, 2010

### AWARDS AND GRANTS

- 2016 Winston C. Mitchell and Surel L. Mitchell Family Foundation, honorarium award, Boise, ID
- 2017 Peter S. Reed Foundation, NY

### COLLECTIONS

- Kelly Wearstler, Interior Designer, Los Angeles



Artspace Warehouse is one of the world's **leading galleries for savvy contemporary art collectors**. With galleries in Zurich and Los Angeles, Artspace Warehouse specializes in guilt-free international urban, figurative, pop, graffiti and abstract art.