

7358 Beverly Blvd

Los Angeles, CA 90036

t. +1.323.936.7020

info@artspacewarehouse.com | www.artspacewarehouse.com

Mon - Fri 10am - 6pm | Sat 10am - 8pm | Sun 12 - 6pm



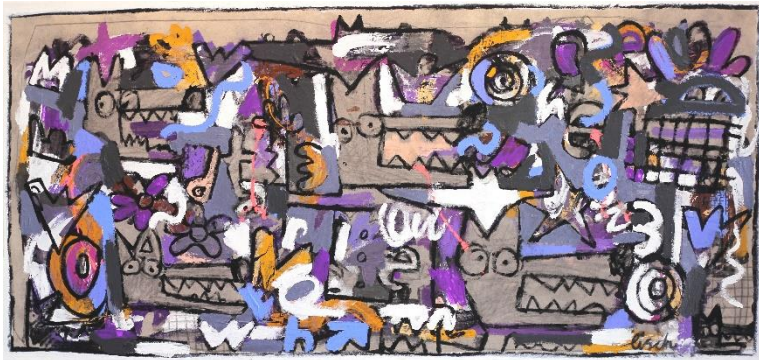
## JONAS FISCH

Born in a small fisherman's village in southern Sweden, Los Angeles based artist Jonas Fisch paints with a jazz-like spontaneity, expressing personal emotions, commenting on contemporary society, and exploring old mythologies. Formulating a galaxy of the unknown, Fisch's textural paintings flood the mind with possibility. His process is instinctive and organic, the paintings energetic and vibrant, emerging from his subconscious without judgment. They are constructed by feelings trying to find a harmony. Endless figures, messages, layers and symbols move in and out of focus as the eye explores his puzzle pieces with multiple solutions.



"As a fundamentally introspective person I have an explosive need to express and communicate my innermost rays, reflections, and shadows. The brush allows me to explore my own subconscious, to examine, confront and process my innermost feelings. I usually don't have a preconceived vision, but rather a strong idea or a general notion of what I want to create. I put a lot down, I take a lot away, until I feel there's a harmony, energy and a flow. Sometimes it's past or present events that become vibrant, buzzing commentary on society - expressed in figures, words and shapes. Other times it's personal experiences and emotions that flood my mind and drip onto the canvas. I try and not to judge or censor what comes up and at a certain point the painting comes alive, takes on a life of its own and reveals itself. It's the point of no return and I have no choice but to paint it."

Faces appear and struggle to be found again as the same shapes merge into the arm of a larger composite character, letters in a cryptic word, poem or clusters of stars and crowns and trapezoids. Jonas has exhibited across California, in New York, Chicago, Switzerland and most recently, Hong Kong. His paintings can be found in private collections all over the globe.



*Artspace Warehouse is one of the world's leading galleries for savvy contemporary art collectors. With galleries in Zurich and Los Angeles, Artspace Warehouse specializes in guilt-free international urban, figurative, pop, graffiti and abstract art.*

7358 Beverly Blvd

Los Angeles, CA 90036

t. +1.323.936.7020

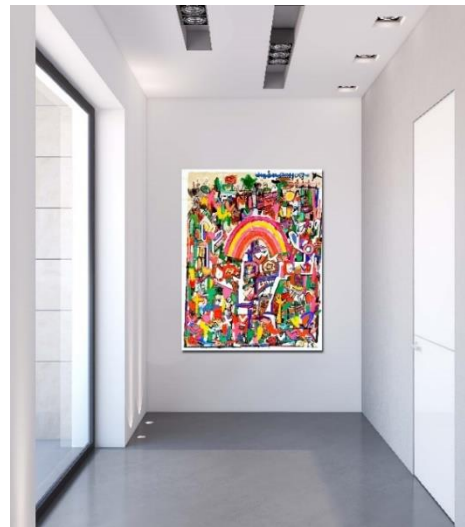
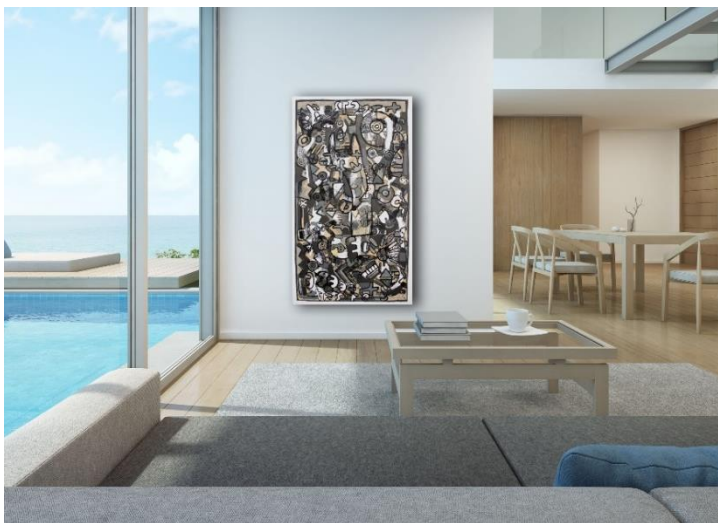
info@artspacewarehouse.com | www.artspacewarehouse.com

Mon - Fri 10am - 6pm | Sat 10am - 8pm | Sun 12 - 6pm



## Exhibitions

- 2018 Affordable Art Fair New York, NY
- 2018 The Other Art Fair, Los Angeles, CA
- 2017 "From Seriousness to Silliness," Artspace Warehouse, Los Angeles, CA
- 2017 "Cratedigger Vol. 2," Gabba Gallery, Los Angeles, CA
- 2017 Affordable Art Fair Hong Kong
- 2016 Affordable Art Fair New York, NY
- 2016 "Layers and Discovery," Artspace Warehouse, Los Angeles, CA
- 2016 Street Art & Pop Exhibition, Saatchi Gallery, Santa Monica, CA
- 2016 Palm Springs Fine Art Fair, CA
- 2015 Affordable Art Fair New York, NY
- 2015 West Elm Exhibition, Saatchi Art, Los Angeles, CA
- 2015 Palm Springs Fine Art Fair, CA
- 2015 Artspace Warehouse, Los Angeles, CA
- 2015 Gallerie Sparta, Los Angeles, CA
- 2014 Gallery Saint Darling, Chicago, IL
- 2013 Westmore Loft Gallery, Los Angeles, CA
- 2013 533 Gallery, Los Angeles, CA
- 2012 Gallery Godo, Los Angeles, CA



Artspace Warehouse is one of the world's **leading galleries for savvy contemporary art collectors**. With galleries in Zurich and Los Angeles, Artspace Warehouse specializes in **guilt-free international urban, figurative, pop, graffiti and abstract art**.