



## JEREMY PRIM

Emotive, rather than being purely representational, Jeremy Prim's oil paintings are inspired by the Pacific coastline. Known for his evocative minimalist seascapes, the impetus for Prim's work derives from the beauty of the ocean and the peaceful solitude one feels in its presence.

The contemporary artworks from Prim are both abstract and figurative. While expressive in their rhythm, each painting is precise and powerful.



Layers of blue explore a calming and emotional palette. As the hues blend and collide the viewer becomes immersed in the almost tactile rhythm of the ocean. Sky meets the sea in multiple horizon lines which reference the continuous rhythm of the sea.

Each painting is created using many thin layers of translucent oil paint tempered with cold wax. This process washes the artwork with a sense of foreshortening, bringing the viewer into the vastness of Prim's subject.

Prim is based in Seattle, Washington and is inspired by his surroundings: "The paintings I create are evocative of the Pacific Northwest coast" states the artist.

While referentially specific the paintings capture more than a singular scene "They are a collective of physical and sensory reinterpretations of the Pacific, primarily derived from memory and intuition."



### SOLO EXHIBITIONS

- 2022 Blue Like the Ocean, Artspace Gallery, Los Angeles, CA
- 2019 Michael Birawer Gallery, Seattle, WA
- 2018 Atelier Drome, Seattle, WA
- 2016 Wittman Estes, Seattle, WA
- 2015 Threshold Gallery @ Mithun, Seattle, WA

### GROUP EXHIBITIONS

- 2023 The Art of Water, James May Gallery, Milwaukee, WI
- 2022 Artspace Warehouse, Los Angeles, CA  
Serena & Lily Design Shops, Chicago, IL; Dallas, TX
- 2021 Artspace Warehouse, Los Angeles, CA  
Serena & Lily Design Shops, San Francisco, CA & Boston, MA
- 2020 Serena & Lily, Westport, CT  
Artspace Warehouse, Los Angeles, CA

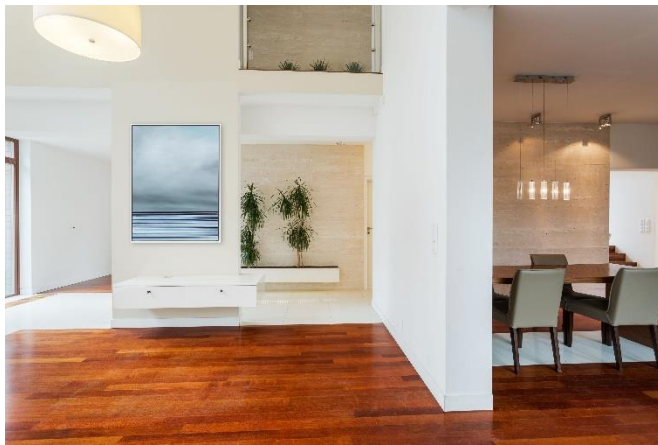




- Michael Birawer Gallery, Seattle, WA
- 2019 The Other Art Fair, Saatchi Art, Los Angeles, CA
- Michael Birawer Gallery, Seattle, WA
- The Alexis, Seattle, WA
- 2014 Smith + Vallee Gallery, Edison, WA

### TV & FILM

The Dropout, Hulu



Artspace Warehouse is one of the world's **leading galleries for savvy contemporary art collectors**. With galleries in Zurich and Los Angeles, Artspace Warehouse specializes in guilt-free international urban, figurative, pop, graffiti and abstract art.