

7358 Beverly Blvd

Los Angeles, CA 90036

info@artspacewarehouse.com | t. 323.936.7020

www.artspacewarehouse.com

Mon – Fri 10am - 6pm | Sat 10am - 8pm | Sun 12 - 6pm



GIUSEPPE BEDDRU

Italian self-taught painter Giuseppe Beddru has distinguished himself in contributing conceptual insight to the course of contemporary art by embracing experimentation of non-traditional materials, such as thick superposed Plexiglas-panels. His formative creative years were spent in Agrigento, Sicily where he absorbed the influence of classical Greek art. Many of Beddru's multi-media paintings include the visual motifs of classical Greek bas-relief sculpture, flattened within the confines of Plexiglas. Athletes and female portraits in profile are reminiscent of coins and popular classical imagery. After having admired and studied the works of the great masters, Beddru left Italy to continue his practice abroad.



His figurative pictorial subjects are “unconformably” represented through ink-based mixed media, applied via reverse painting techniques inspired by Italian painters from the seventeenth century. By developing variations of this technique, Beddru focuses on the use of vivid pigments to create striking vibrancy as a distinctive trait of his style. The eye of the observer is simultaneously caught by both a fascinating chromatic balance and the mystery of enigmatic figures who, from the depths of a mythological past, bring secretive symbols to our contemporary present as messages to decipher.

Reminiscent of the Fauvist movement and Italian classicism, Beddru's bold outlines, dynamic brushstrokes and contrasting use of color make his work visually exciting. His work is extremely personal as well, drawing upon the Arab presence on the island where he grew up and his own Italian heritage. His paintings are indicative of self-discovery and emotional awareness, while also focusing on color, composition, and technical skill. This balance of visual dynamics and emotional response is essential to Beddru's work.

The artist represents those who are considered “different”, those who are rejected because of prejudice or, simply, ignorance. Popular imagery within the context of Greek art history is overturned by atypical characters that populate his artistic world and speak up loud to make their voice heard.

Giuseppe Beddru currently exhibits internationally on a regular basis in venues spanning from highly ranked art fairs to museums in both solo and group exhibitions. His artwork is part of international private collections such as the collection of the Saudi Royal Family and businessman Graeme Hart in New Zealand.



Exhibitions

- | | | |
|------|---|--|
| 2019 | Affordable Art Fair New York
Artspace Warehouse, Los Angeles, CA
First Art Fair, Amsterdam, Netherlands
Art Palm Springs, Palm Springs, CA
Art Up, Lille, France
ACAF Pop Up, Maasmechelen Village, Belgium
AAF New York, NY
London Art Bienalle 2019, London, UK
Solo Show, Spazio Hus, Milano, Italy
Art3f, Ghent, Belgium | Gallery Art & Lef Groningen, Netherlands
Affordable Art Fair New York
Kolner Liste 2018 Koln, Germany
Affordable Art Fair Hong Kong
Salon International d'Art Contemporain Cannes, France
Exhibition in Museo Crocetti Rome, Italy
ACAF Bozar Museum Brussels, Belgium
Antwerp Art Fair Antwerp Belgium
Affordable Art Fair Amsterdam, Netherlands
Luxembourg Art Fair Luxembourg |
| 2018 | Affordable Art Fair Milan, Italy
Gallery Sille, Outwater Netherlands
Art Palm Springs USA
AD Art Show Sotheby's New York | 2017
Affordable Art Fair Amsterdam, Netherlands
Florence Biennale, Florence, Italy |

Artspace Warehouse is one of the world's **leading galleries for savvy contemporary art collectors**. With galleries in Zurich and Los Angeles, Artspace Warehouse specializes in guilt-free international urban, figurative, pop, graffiti and abstract art.

7358 Beverly Blvd

Los Angeles, CA 90036

info@artspacewarehouse.com | t. 323.936.7020

www.artspacewarehouse.com

Mon – Fri 10am - 6pm | Sat 10am - 8pm | Sun 12 - 6pm



2016

- Accessible Art Fair, Bozar Museum, Brussels, Belgium
- Notte Italiana, Brussels, Belgium
- Affordable Art Fair New York, NY
- Ldxartodrome Gallery, Berlin, Germany
- Colorful, Knokke, Belgium
- Art Marbella, Spain
- Roa Gallery, London, UK
- Artexpo New York, USA
- London Art Biennale, London, UK
- Gallery Evvivanoe, Torino, Italy
- Art Palm Springs, California, USA
- AAF Milan, Italy
- Red Dot Miami, USA
- Shanghai Art Fair, China
- AAF Amsterdam, Netherlands
- Accessible Art Fair, Brussels
- Art Marbella, Spain
- AAF Hampstead, London, UK
- Triennale dell'Arte Contemporanea, Verona, Italy
- Arte Jubilaem, Rome, Italy
- Gallery LDXArtodrom, Berlin, Germany
- New York ArtExpo
- Affordable Art Fair New York, NY

2015

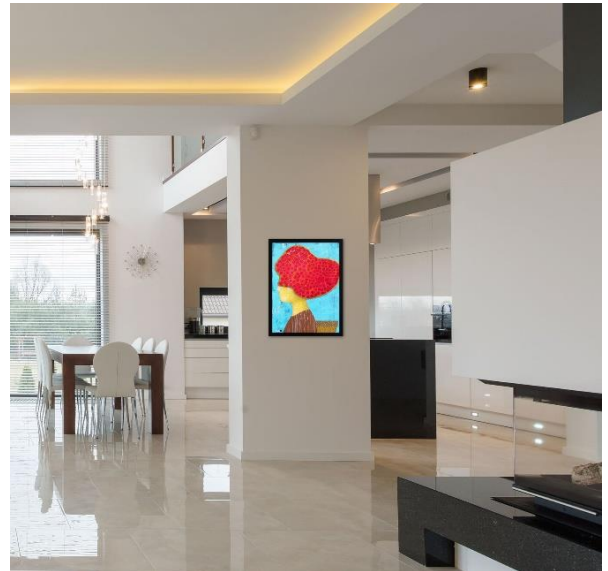
- Palm Springs Fine Art Fair, California, USA
- Artspace Warehouse, Los Angeles, California, USA
- Parallax Art Fair, London, UK
- Fondation Folon Museum, La Hulpe, Belgium
- Wine & Canvas, Brussels, Belgium
- Affordable Art Fair London, UK
- Biennale di Chianciano, Italy
- Art Magna Expo, The Seed Factory, Brussels, Belgium
- 7th Passion for Freedom Art Festival, London, UK
- The Decorative Fair, Battersea Park, London, UK
- Accessible Art Fair, Brussels, Belgium
- L'Isola che c'e (The Everlasting Island), Palermo, Italy
- Affordable Art Fair Amsterdam, Netherlands
- Expo Devenir Revenir, Mons, Belgium
- Classic Event, Kortrijk Xpo, Belgium
- Espace Culturel la Piola Libri, Brussels, Belgium

2014

- Accessible Art Fair, Brussels, Belgium

2013

- Passion for Freedom. London, UK
- Accessible Art Fair Brussels, Belgium



Artspace Warehouse is one of the world's **leading galleries for savvy contemporary art collectors**. With galleries in Zurich and Los Angeles, Artspace Warehouse specializes in guilt-free international urban, figurative, pop, graffiti and abstract art.