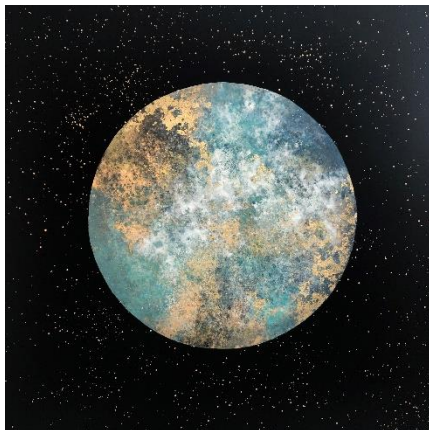


## CHARLOTTE ELIZABETH

Charlotte Elizabeth has been working with paint professionally for over fifteen years. Elizabeth's training in theatre design preceded a busy career as a Theatrical Scenic Artist in London's West End. Working with some of the best scenic artists in the world, Elizabeth created large scale backcloths and murals for many famous venues, including The Royal Opera House, The ENO and even the Olympic Opening Ceremony. Examples of Elizabeth's work can be seen on stage and screen all over the world.



A move to Asia inspired a change in direction for Elizabeth's life and career. Since moving to Asia, Elizabeth has been met with much acclaim for her series "Singapore Skies", which are large scale ethereal abstract cloudscares. Each artwork is inspired by the incredible sky-high architecture of Asia and the dramatic tempestuous climate. The work is both dramatic and tranquil, with many clients remarking upon the mindful and meditative quality the pieces evoke. Elizabeth has been collected and exhibited across the globe.



According to Charlotte Elizabeth: *"My years as a scenic artist has taught me to be bold, ambitious, and confident when working with paint. I delight in the magical transformative quality of working with layer upon layer of color, pigment, and tone. I'm inspired by the glory of nature's elements and the drama of the skies. Every painting is a journey, layered with my identity, as a woman, an artist, a mother, a fighter, a nurturer. My work is an instinctive, sensorial, tactile experiment where the color does the talking and I merely allow the images to reveal themselves."*

### Exhibitions

2020	Solo exhibition, Mayne Gallery, UK London Affordable Art Fair (AAF), UK	So Sofitel, Singapore Hong Kong AAF, Hong Kong
2019	Singapore AAF, Singapore Boutique Fair, Singapore Group show Miaja gallery, Singapore "Caught", Miaja Gallery with SRT, Singapore Melbourne AAF, Melbourne, Australia	Solo Show, Miaja Gallery, Singapore 2018 Singapore AAF, Singapore Boutique Fair, Singapore Designer collective MAH, Texas

7358 Beverly Blvd  
Los Angeles, CA 90036  
info@artspacewarehouse.com | t. 323.936.7020  
www.artspacewarehouse.com  
Mon - Sat 10am - 6pm | Sun 12 - 6pm



*Artspace Warehouse is one of the world's **leading galleries for savvy contemporary art collectors**. With galleries in Zurich and Los Angeles, Artspace Warehouse specializes in guilt-free international urban, figurative, pop, graffiti and abstract art.*