

## BRANDON NEHER

Brandon Neher was born in Burbank, CA, in 1983 and was raised in the San Gabriel valley. He was educated at Brooks Institute of Photography for 3 years. He discovered a great deal of his personal style while working and studying in Ventura, CA.



Neher has always had an eye for bold patterns and surreal abstractions. Visual landscapes of the picturesque central California coastline dominate a most of the imagery found in his collage-style paintings, along with popular cartoon characters and geometric patterns.

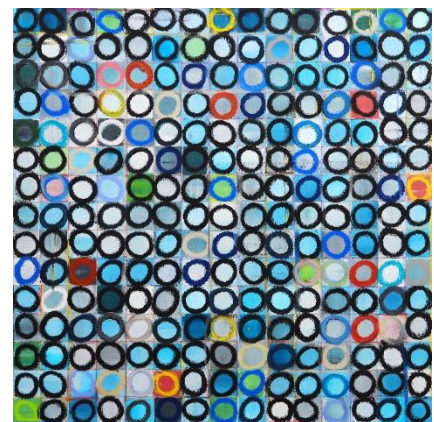


He has completed works of art across mediums as diverse as 16mm film, watercolor, oil, sculpture, charcoal, photography, mixed media collage and print transfers. He now lives and works in the Los Angeles area, and continues to be inspired by the vibrant lives and landscapes here.

The artist says of his paintings, “While I am inspired by many other artists’ work, I am particularly drawn to German expressionist painters. I admire their ability to convey a narrative on canvas. I have always enjoyed making marks on things for as long as I can remember, which has translated into a love of imagery that captures and conveys a feeling which is fleeting, beautiful, and unique to all people. I always aim for considering my images carefully before painting them, and layering color in a way that hopefully reminds the eye of things previously seen but casts them in a new light.”

### Recent Exhibitions

- 2018 Private Collection, Venice, CA
- 2018 Private Collection, Las Vegas, NV
- 2017 The Hangar, Venice, CA
- 2016 AVA Studio City apartment complex- 4 Mural Commission
- 2015 Hotel Figueroa, Los Angeles, CA
- 2015 Grot Furniture, Redondo Beach, CA
- 2015 Ego Gallery, Redondo Beach, CA
- 2014 J1 Gallery, Scottsdale, AZ
- 2013 Hyatt House, Austin, TX
- 2012 Bunny Gunner Gallery, Pomona, CA
- 2012 RivaBella Tuscan Farmhouse Restaurant, West Hollywood
- 2011 Bunny Gunner Gallery, Pomona, CA
- 2009 Live Style Arts, Venice, CA
- 2007 Moore Studio Exhibit Space, Pomona, CA



Brandon’s artwork has been featured in television productions such as ABC Family’s *Secret Life of the American Teenager*, HGTV’s *Design on a Dime*, and NBC’s *The Biggest Loser*.

*Artspace Warehouse is one of the world’s leading galleries for savvy contemporary art collectors. With galleries in Zurich and Los Angeles, Artspace Warehouse specializes in guilt-free international urban, figurative, pop, graffiti and abstract art.*

7358 Beverly Blvd  
Los Angeles, CA 90036  
info@artspacewarehouse.com | t. 323.936.7020  
www.artspacewarehouse.com  
Mon - Fri 10am - 6pm | Sat 10am - 8pm | Sun 12 - 6pm



*Artspace Warehouse is one of the world's leading galleries for savvy contemporary art collectors. With galleries in Zurich and Los Angeles, Artspace Warehouse specializes in guilt-free international urban, figurative, pop, graffiti and abstract art.*